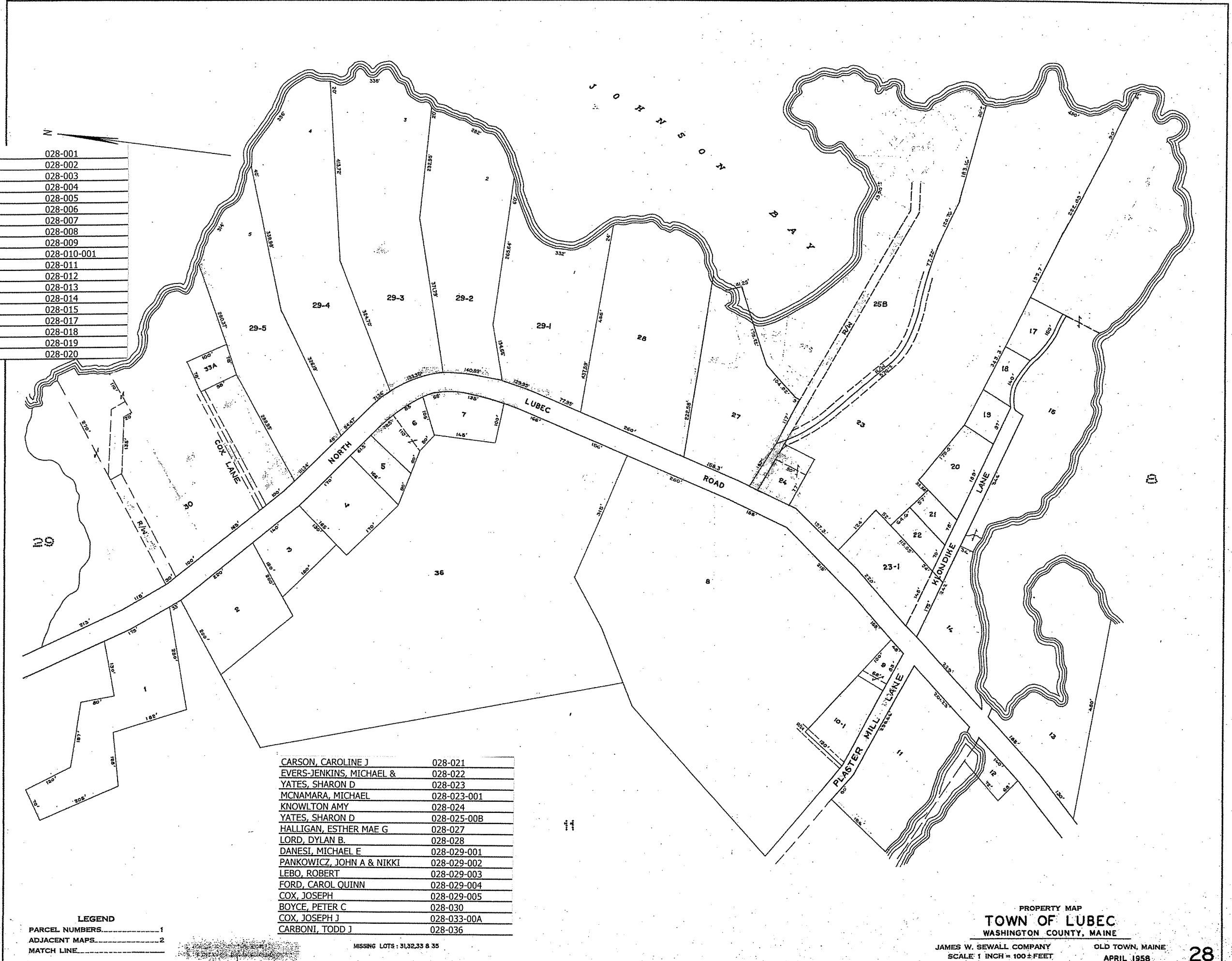


AVERY, CHESTER P JR	028-001
NEWELL, JOHN L	028-002
TINKER, EUGENE	028-003
MULTHOFF, JENNIFER	028-004
FREEWAY, INVESTMENTS	028-005
A C CARVER INC	028-006
CR 2018 LLC	028-007
WAHIB, SALAM M	028-008
COUNCILMAN, CHERYL	028-009
WAHIB, SALAM M	028-010-001
ONEIL, JAMES	028-011
CASE, BARBARA	028-012
STANLEY, SHELDON M	028-013
STANLEY, SHELDON M	028-014
TINKER, TIMOTHY B	028-015
MARZOLL, SHELDON	028-017
MARZOLL, JONATHAN	028-018
MARZOLL, JONATHAN	028-019
MARZOLL, JONATHAN	028-020



CARSON, CAROLINE J	028-021
EVERS-JENKINS, MICHAEL &	028-022
YATES, SHARON D	028-023
MCMAMARA, MICHAEL	028-023-001
KNOWLTON AMY	028-024
YATES, SHARON D	028-025-00B
HALLIGAN, ESTHER MAE G	028-027
LORD, DYLAN B.	028-028
DANESI, MICHAEL E	028-029-001
PANKOWICZ, JOHN A & NIKKI	028-029-002
LEBO, ROBERT	028-029-003
FORD, CAROL QUINN	028-029-004
COX, JOSEPH	028-029-005
BOYCE, PETER C	028-030
COX, JOSEPH J	028-033-00A
CARBONI, TODD J	028-036

**LEGEND**  
 PARCEL NUMBERS.....1  
 ADJACENT MAPS.....2  
 MATCH LINE.....

MISSING LOTS : 31,32,33 & 35

PROPERTY MAP  
**TOWN OF LUBEC**  
 WASHINGTON COUNTY, MAINE  
 JAMES W. SEWALL COMPANY  
 SCALE 1 INCH = 100 ± FEET  
 OLD TOWN, MAINE  
 APRIL 1958