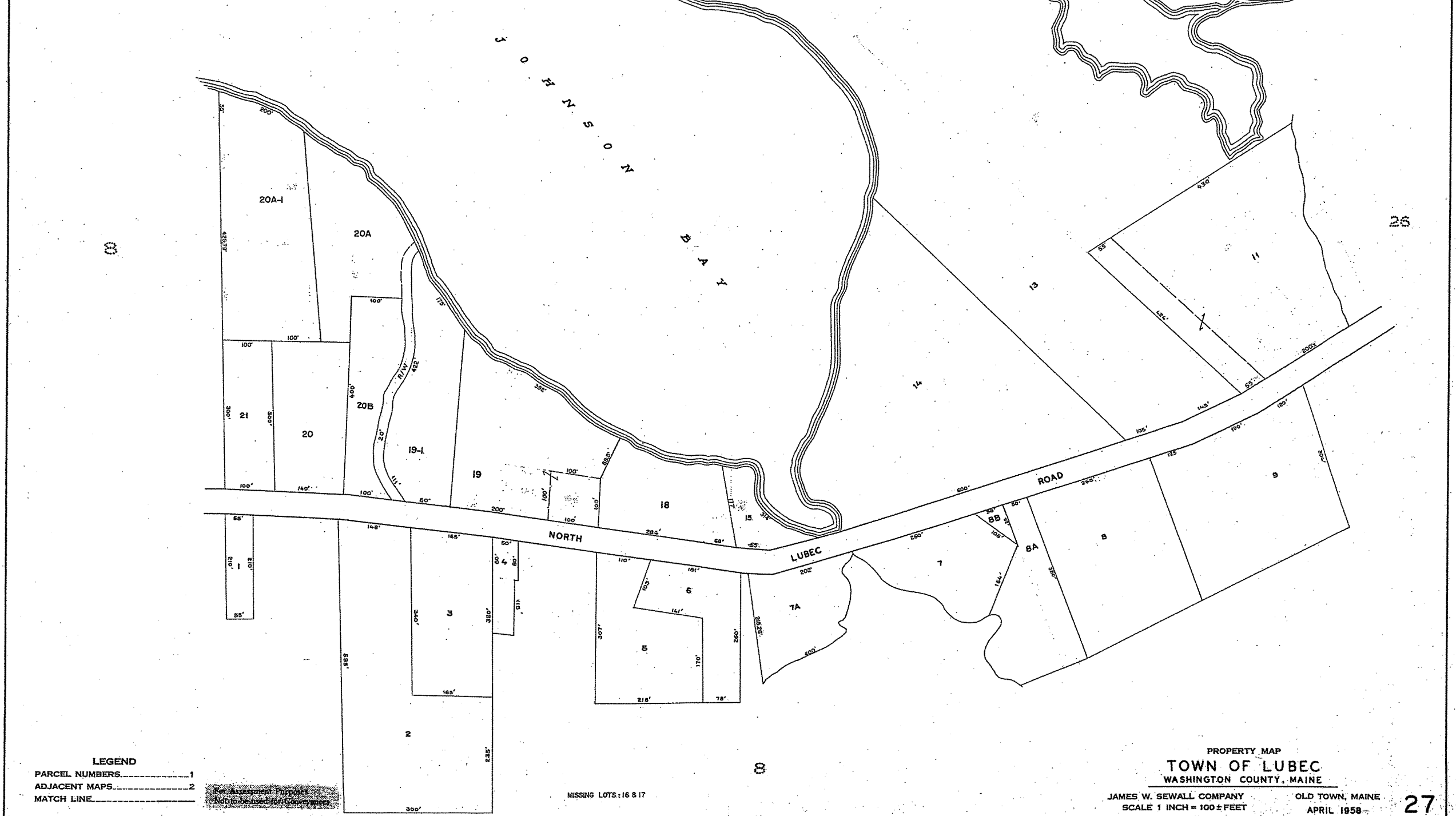


REED, DONNA L	027-001
MARSHALL, DANIEL M	027-002
DINSMORE, CARROLL W SR	027-003
LYONS, GUY L	027-004
PIKE, DEAN S	027-005
PIKE, DEAN S	027-006
MURRAY, DAVID W	027-007
ROPER, ROBERT K	027-007-00A
DAYE, WILLIAM & CATHERINE	027-008
DAYE, WILLIAM A	027-008-00A
AREFNIA, MOHAMMAD TAGHI	027-008-00B
DAYE, WILLIAM A	027-009
BAKER ARTHUR	027-011
COOBSCOOK SHORES	027-013
VACZY, ELIZABETH	027-014
ROPER, ROBERT K	027-015
PIKE, DEAN S	027-018
GILROY, EDWIN D	027-019
LUCAS, ADAM	027-019-001 UI 1
LUCAS, DAVID	027-019-001 UI 2
NEWMAN, CAROLYN	027-020
JONES, PHILLIP L	027-020-00A
JONES, PHILLIP L	027-020-00A-001
KUPKA, PRUDENCE	027-020-00B
CONKLIN, ROBERT H & JEAN	027-021



**LEGEND**  
 PARCEL NUMBERS..... 1  
 ADJACENT MAPS..... 2  
 MATCH LINE.....

PROPERTY MAP  
**TOWN OF LUBEC**  
 WASHINGTON COUNTY, MAINE

JAMES W. SEWALL COMPANY  
 SCALE 1 INCH = 100 ± FEET  
 OLD TOWN, MAINE  
 APRIL 1958