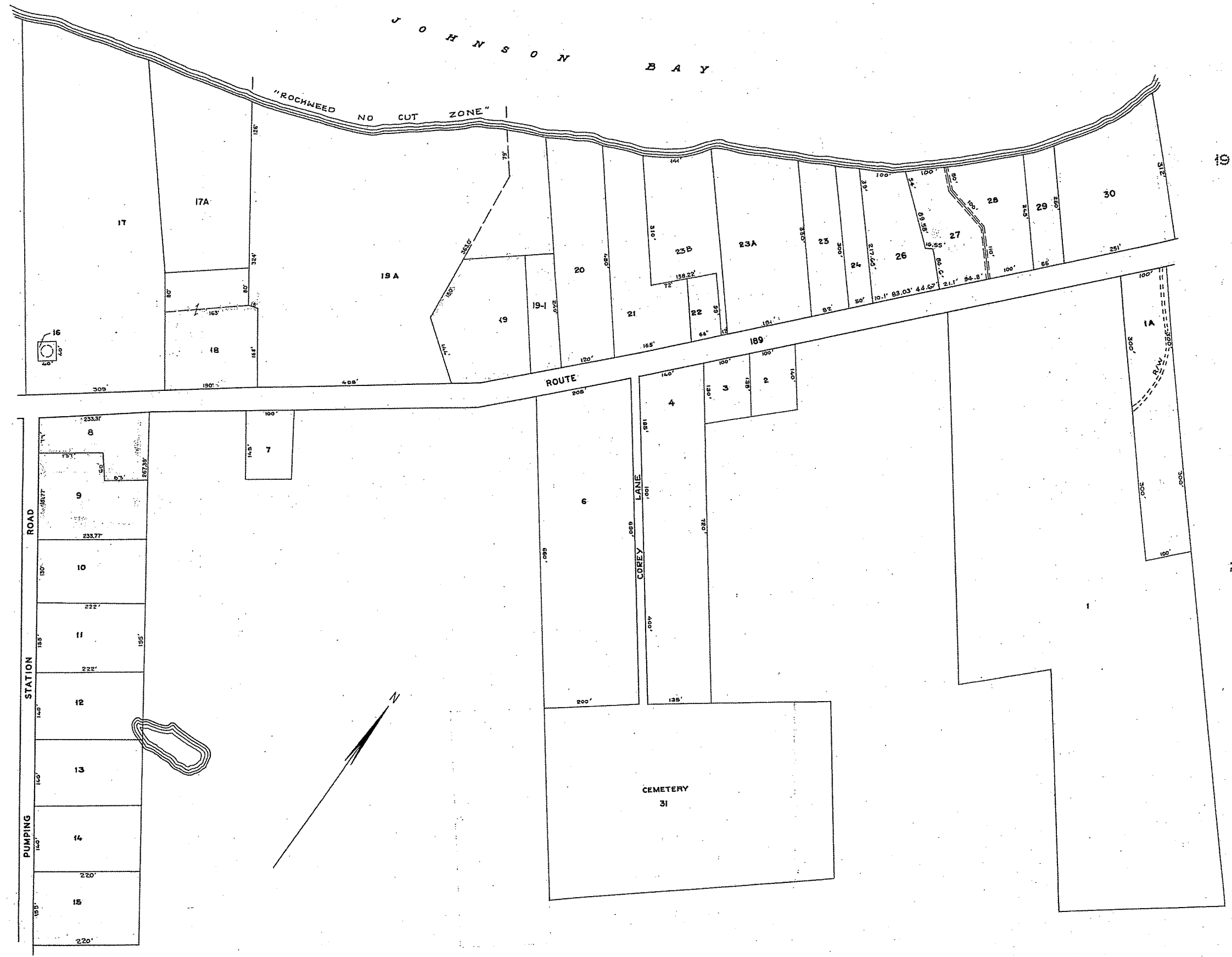


ELLIOTT, LILLIANA MONICA	025-001
ELLIOTT, LILIANA MONICA	025-001-00A
OLSON, LARRY R	025-002
OLSON, ERNEST HEIRS OF	025-003
COREY, WILLIAM A	025-004
COREY, WILLIAM A	025-006
GARTMAYER VINCENT	025-007
HENDRICKS, STEVEN	025-008
WILCOX, SUZANNE MARIE	025-009
DENBOW, KIM	025-010
ELLIOTT, MARJORIE L	025-011
ESTATE OF CASE, BERNARD	025-012
ESTATE OF CASE, BERNARD	025-013
ESTATE OF CASE BERNARD W	025-014
GREENE, DEREK	025-014-000-MH1
KINNEY, RALPH	025-015
LUBEC WATER DISTRICT	025-016
HEHNLY, BRUCE S	025-017
HAYWARD, DONALD I JR	025-017-00A
HAYWARD, DONALD I JR	025-018
DUE EAST REAL ESTATE, LLC	025-019
POIRIER, JOHN E	025-019-001
LUBEC TOWN OF	025-019-00A
SIMMONDS, ELAINE C LT	025-020
CALDER, LAURA F LT	025-021
BARKER, DALE M	025-022
CANTLON, RICHARD E	025-023
OLSON, GEORGE H	025-023-00A
THEL, LOUIS T	025-023-00B
KRULL, CHARLES A	025-024
SWOPE, GALE ELIZABETH	025-026
SWOPE, GALE ELIZABETH	025-027
GRASS, MORELL L	025-028
CONRAD, LAWRENCE W &	025-029
CASE, PETER E	025-030
LUBEC TOWN OF	025-031



N
0

LEGEND
 PARCEL NUMBERS.....1
 ADJACENT MAPS.....2
 MATCH LINE.....

MISSING LOTS: 5, 25 & 27

PROPERTY MAP
TOWN OF LUBEC
 WASHINGTON COUNTY, MAINE
 JAMES W. SEWALL COMPANY OLD TOWN, MAINE
 SCALE 1 INCH = 100 ± FEET
 APRIL 1958