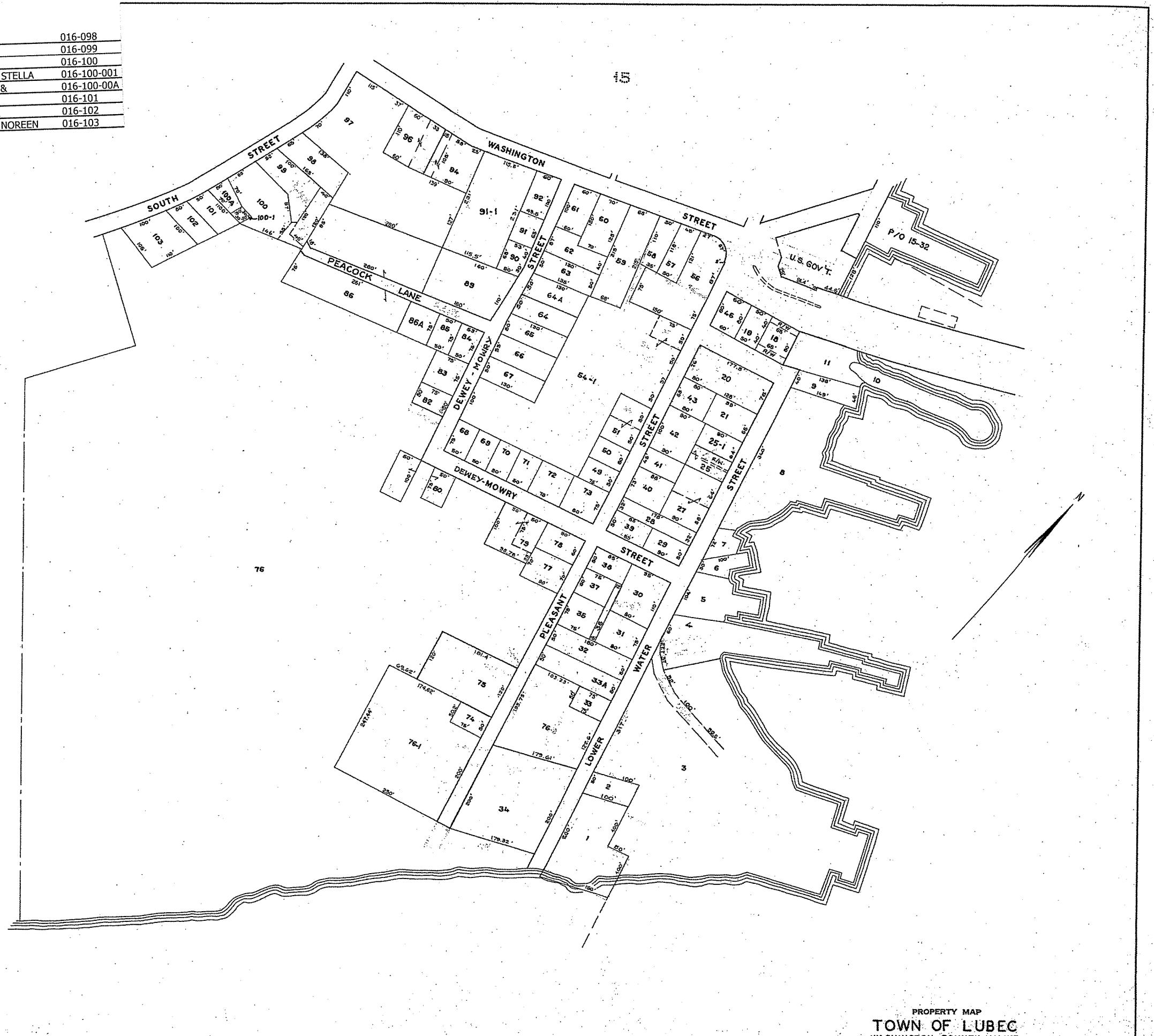


REINHART, DANIEL M.	016-001
RIER, ADRIAN	016-002
RUST, MARSHALL D &	016-003
LEGRIS, CHARLES G	016-004
BAILEY, SONJA A	016-005
BUEHNER, JAMES H	016-006
BUEHNER, FREDERIC A	016-007
LUBEC TOWN OF	016-008
COULTHARD, JUDITH E	016-009
MAINE STATE OF	016-010
SPEAR, WALTER J	016-011
US POST OFFICE AND	016-012
ENTRUST ADMINISTRATOR	016-018
NOWICKI, EUGENE W JR	016-019
SLAY, CHRISTOPHER K	016-020
SLAY, CHRISTOPHER	016-021
WAGNER MICHAEL J	016-025
LASKEY PENNY	016-025-001
ALLEN, THOMAS J	016-027
ALLEN, THOMAS J	016-028
WHITEHEAD, HOLLY	016-029
FITZSIMMONS, DANIEL &	016-030
TAYLOR, RANDY SCOTT	016-031
THIBODEAU, JONNYE L &	016-032
LITTLE, GARYSON	016-033
LITTLE, GARYSON	016-033-00A
LITTLE, GARYSON S.	016-034
MISHKIN, KATHLEEN	016-035
FITZSIMMONS, DANNY AND	016-036
MISHKIN, KATHLEEN A	016-037-000
WILLIAMS, ERNEST L	016-038
BARRETT, JACOB T	016-039
TAYLOR, EVERETT C TRUST	016-040
PRIMEAU KAREN F TRUSTEE	016-041
HOWARD, GARY P	016-042
COX JR., BARRY	016-043
ROBINSON, PETER	016-046
WRIGHT, DARLENE	016-049
SIGGENS, CATHERINE A	016-050
FRANCIS, SUZETTE	016-051
LEIGHTON, DALE E	016-054-001
LUBEC DEVELOPMENT, LLC	016-056
GOETTING, THOMAS J	016-057
ALBANI, GEORGE M	016-058
STREET, CLARENCE J	016-059
TARSON PETERS JANE	016-060
ADAMS, RICHARD & RENA	016-061
CARICOFE, SEAN W.	016-062
FITZSIMMONS, CARLETON	016-063
JOLICOEUR-BERG, SONYA R	016-064
GORMAN, EDWARD J	016-064-00A
SCRIVANI, MICHAEL & JANE	016-065
MOORE, FRANK E	016-066
JONES, LARRY P	016-067
DENBOW, DARRELL HEIRS OF	016-068
DENBOW, JODI	016-068-000-MH1
WRIGHT, CAROLYN	016-069
WRIGHT, RICKY W	016-070
DOWNEAST COASTAL	016-071
RICE, CHARLOTTE ANN	016-072
MURPHY, LYDIA	016-073
EMERA MAINE	016-074
LUBEC TOWN OF	016-075
DOWNEAST COASTAL	016-076
LUBEC TOWN OF	016-076-001
HADA, EDWARD & LINDA	016-076-002
HOOPER, ROBERTA L	016-077
HOOPER, ROBERTA L	016-078
DENBOW, CYNTHIA G S	016-079
WELCOME, RHONDA M	016-080
WRIGHT, RUSSELL JR	016-082
WRIGHT, CAROLYN	016-082-000-MH1
LAPIERRE, PHILIP	016-083
SCRIVANI, MICHAEL	016-084
SCRIVANI, MICHAEL	016-085
SIMMONDS, JAMES B	016-086
NORDIC DELIGHTS FOODS,	016-086-00A
WARREN, PAUL	016-089
QUIRK, ROGER W	016-090
QUIRK, ROGER W	016-091
ROCHE JAMES B	016-091-001
SUNRISE COUNTY SOLAR	016-092
BROWN, MARGARET P	016-094
BROWN, MARGARET P	016-096
OCEANVIEW NURSING HOME	016-097

WRIGHT WAYNE	016-098
STANLEY, GARY	016-099
CUBBERLY, PAMELA S	016-100
PORTER, BERNARD & STELLA	016-100-001
PORTER, BERNARD E &	016-100-00A
GOODWILLIE, CAROL	016-101
WARNER, PATRICIA L	016-102
PACE, RAYMOND A & NOREEN	016-103



17

76

LEGEND
 PARCEL NUMBERS.....1
 ADJACENT MAPS.....2
 MATCH LINE.....

MISSING LOTS: 14,15,16,17,44,45,47,8,48

PROPERTY MAP
TOWN OF LUBEC
 WASHINGTON COUNTY, MAINE
 JAMES W. SEWALL COMPANY
 SCALE 1 INCH = 100± FEET
 OLD TOWN, MAINE
 APRIL 1958