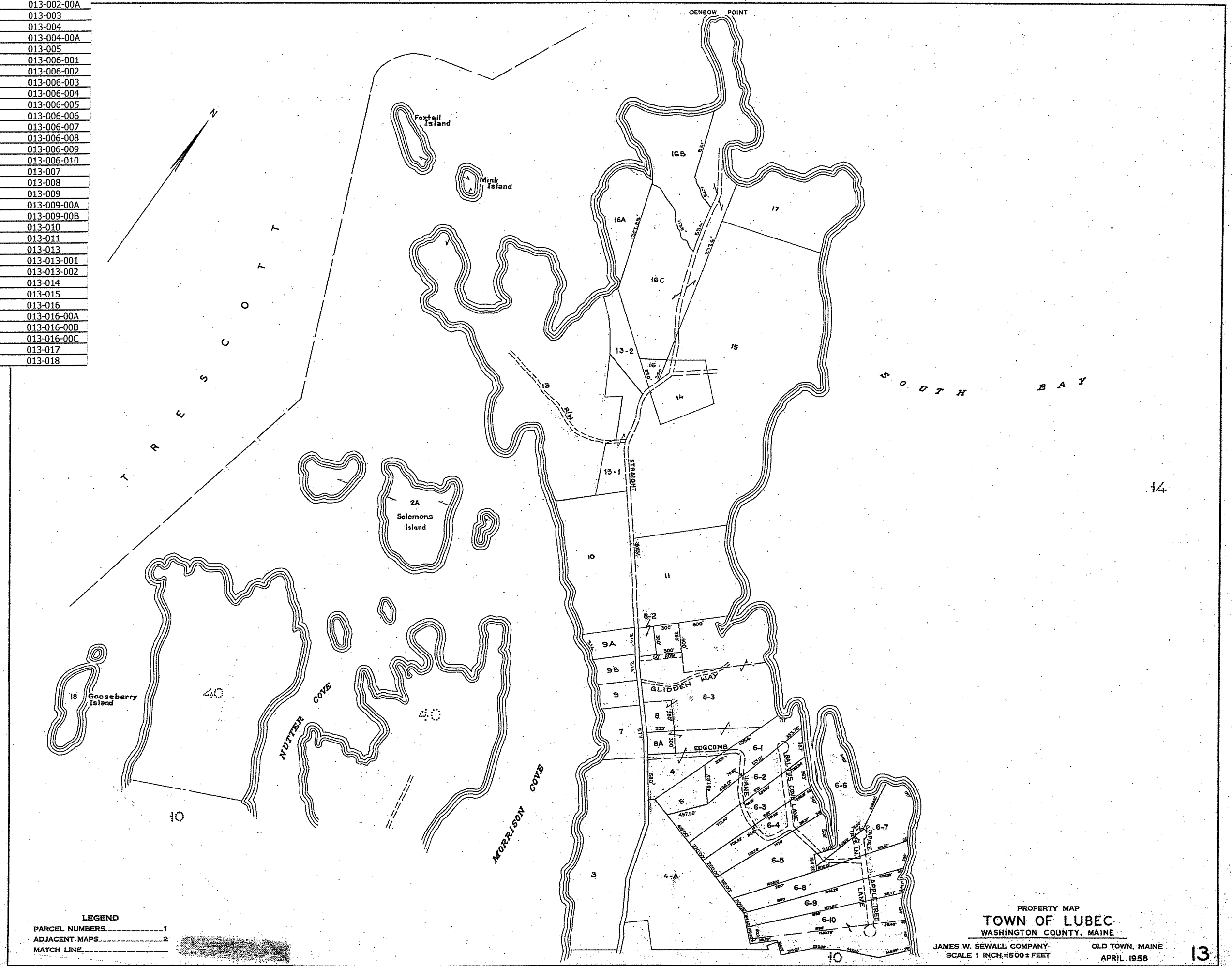


DOWNEAST COASTAL	013-002-00A
DOWNEAST COASTAL	013-003
MURRAY, KEVIN B	013-004
SNOW, TIMOTHY R	013-004-00A
MAHAR, ROLAND R	013-005
GAULT, WILLIAM R.	013-006-001
BENESKI, BRIAN	013-006-002
GRIFFEN, KATHERINE	013-006-003
ZAFONTE, REBECCA	013-006-004
ALBANI, GEORGE M	013-006-005
KAHN, JAMES B	013-006-006
KUYKENDALL, WILLIAM	013-006-007
EDGEComb POINT REALTY	013-006-008
BURPEE, FRANK H III	013-006-009
QUINN, ROBERT E	013-006-010
VAN RIPER, FRANK	013-007
GLIDDEN, CHARLES W	013-008
GLIDDEN, PETER H	013-009
GLIDDEN, LORETTA G	013-009-00A
GLIDDEN, CHARLES W	013-009-00B
MORGESON, CHRISTINE C	013-010
ESTES, RONALD H	013-011
DALEY, JOSEPH (LE)	013-013
DALEY, LUKE F TRUSTEE	013-013-001
CHINETTI, STEPHEN J	013-013-002
DRAKE, ROBERT L	013-014
FLASH ISLAND INC	013-015
GREEN, RICHARD L	013-016
THALACKER, DONNA KREFT	013-016-00A
MURRAY, MICHAEL G	013-016-00B
DOWNEAST COASTAL	013-016-00C
ROSS, LEONARD H	013-017
MAINE COAST HERITAGE	013-018



LEGEND
 PARCEL NUMBERS 1
 ADJACENT MAPS 2
 MATCH LINE

PROPERTY MAP
TOWN OF LUBEC
 WASHINGTON COUNTY, MAINE
 JAMES W. SEWALL COMPANY
 SCALE 1 INCH = 500 ± FEET
 OLD TOWN, MAINE
 APRIL 1958