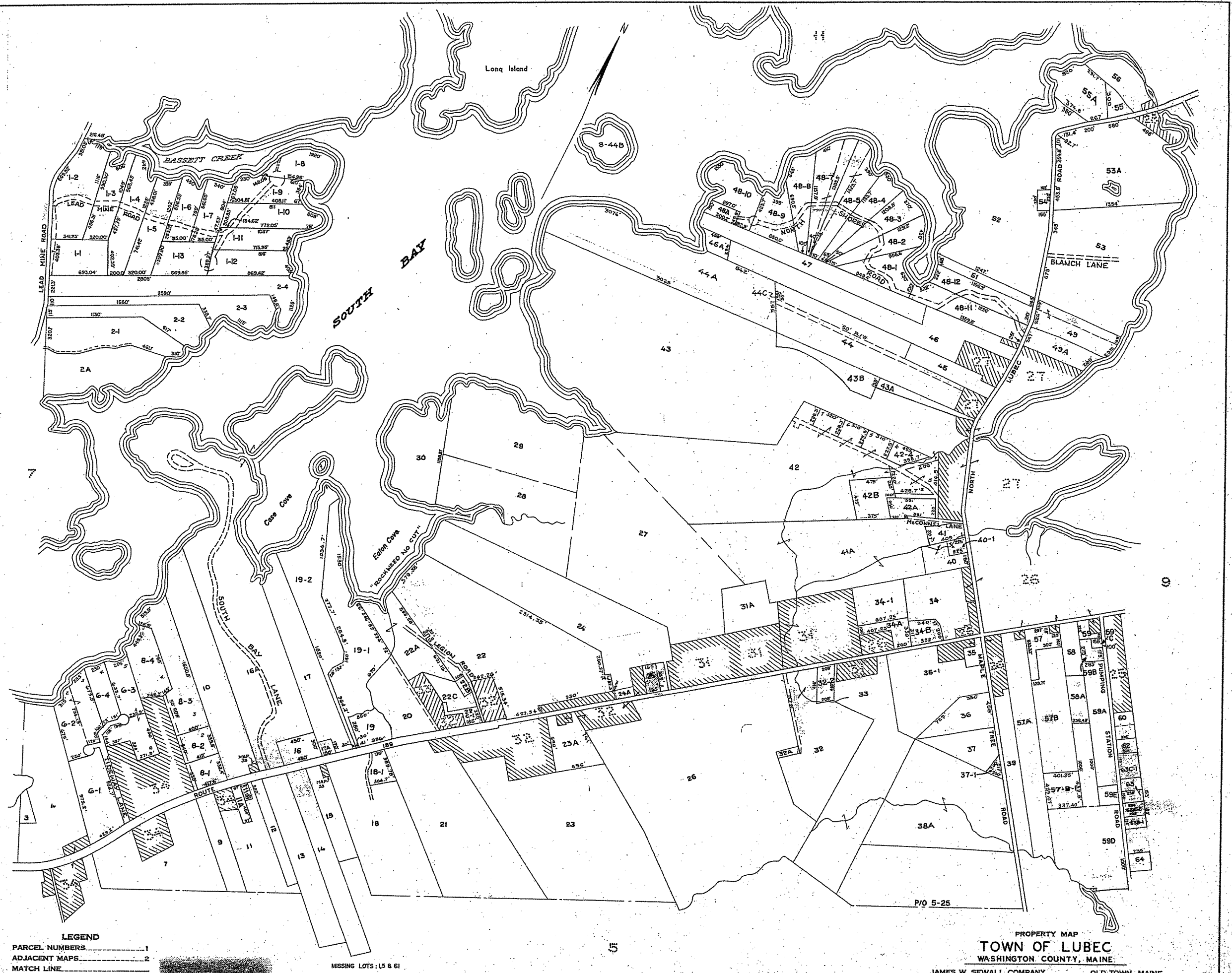


SADICK, FREDERICK M JR	008-001-001
GREGG, CYNTHIA ANN	008-001-002
OCONNOR, FRANCIS E	008-001-003
KAPLAN, DAVID L	008-001-004
PEET JEFFEREY B	008-001-005
OCONNOR, FRANCIS E	008-001-006
FERRIERE DALE B	008-001-007
ZINSER, SCOTT	008-001-008
EWALD, PAUL D	008-001-009
FERRIERE, DALE V	008-001-010
HODGKINS, NATHAN N	008-001-011
TREPKO, GREGORY J	008-001-012
HERR, STEPHEN R	008-001-013
ALAMAZKOOR, MITRA	008-002-001
ALEMAZKOOR LIVING TRUST	008-002-002
ROBSON, PAUL B JR	008-002-003
ELY, SHARAINÉ	008-002-004
FOLEY, WARREN A	008-002-00A
MURRAY, CRAIG & LINDA	008-003
MCGUIRE, JEAN	008-004
SOUTH BAY PROPERTIES, LLC	008-006-001
SOUTH BAY PROPERTIES, LLC	008-006-002
SOUTH BAY PROPERTIES, LLC	008-006-003
PEARSALL, BETH NOELLE	008-006-004
RICE, DAVID B	008-007
RULE, JOHN D	008-008-001
RULE, JOHN D	008-008-002
RULE, JOHN D	008-008-003
RULE, JOHN D	008-008-004
WILLIAMS, PETER	008-009
BALDAUSKI, KAREN ANNE	008-010
RAMSDALL, WILLIAM B	008-011
FULLER, JOHN W III	008-011-001
HALL, CHELSEA	008-011-00A
ROBINSON, CHRISTOPHER	008-012
GAFFEY, EUGENE F	008-013
HAYWARD, LAURENCE LEE	008-014
MAHAR, ROBERTA P	008-015
HAYWARD, LAURENCE LEE	008-016
COBSCOOK SHORES INC.	008-016-00A
STACKHOUSE, JAMES W	008-017
GLUCKMAN, SAMUEL	008-017-00A
DOHERTY JAMES	008-018
DOHERTY ALLEN	008-018-001
DOHERTY ALLEN J	008-019
DOHERTY JAMES	008-019-001
DOHERTY ALLEN	008-019-002
KERINS, CHRISTOPHER	008-020
CHAGNON, JUNE L ESTATE	008-021
LUBEC TOWN OF	008-022
REYNOLDS, HOWARD F	008-022-00A
MACKENZIE, EILEAN M	008-022-00B
HEBB THOMAS TIEMIENA M	008-022-00C
CLINE, JANET THERESA	008-022-00C-001
LUBEC TOWN OF	008-023
DUE EAST R.E. LLC	008-023-00A
VARNEY, ROBERT	008-024
WILCOX, RICKY	008-024-00A
TUCKER, LOIS HEIRS OF	008-025
LEMON, PENOLOPE PIKE -	008-026
MCCONNELL, CARLOYN A	008-027
TYLER, KIMBERLY, & LIBBY,	008-028-000-UI1
OLSON, TREVOR C	008-028-000-UI2
TYLER, KIMBERLY ET AL	008-028-UI3
COBSCOOK SHORES, INC.	008-029
BELGER SANDRA S	008-029 UI1
EVANCHUCK ROBERTA J	008-029 UI2
COLLEGEMAN, MARY P	008-030
MORRISON, GRAY B	008-031-00A
MCCURDY, DAVID JR	008-032
MOORES, KENNETH R.	008-032-002
MCCURDY, DAVID JR	008-032-00A
LASKEY, PENNY	008-033
JONES, MCGINLEY	008-034
KELSEY, LYNN	008-034-001
KELSEY, LYNN	008-034-00A
MILLER, PHILIP VERNON	008-034-00B
BASLEY JR, RAYMOND A	008-035
BRADFORD, MELANIE M	008-035-001
WILCOX, GERALD K	008-036
WILCOX, JANICE	008-036-000-MH1
WALLACE, CLYDE JR	008-037
WALLACE, JONATHAN	008-037-001
LUBEC WATER DISTRICT	008-038-00A
LUBEC WATER DISTRICT	008-039



PROPERTY MAP
TOWN OF LUBEC
 WASHINGTON COUNTY, MAINE
 JAMES W. SEWALL COMPANY
 SCALE 1 INCH = 500± FEET
 OLD TOWN, MAINE
 APRIL 1958