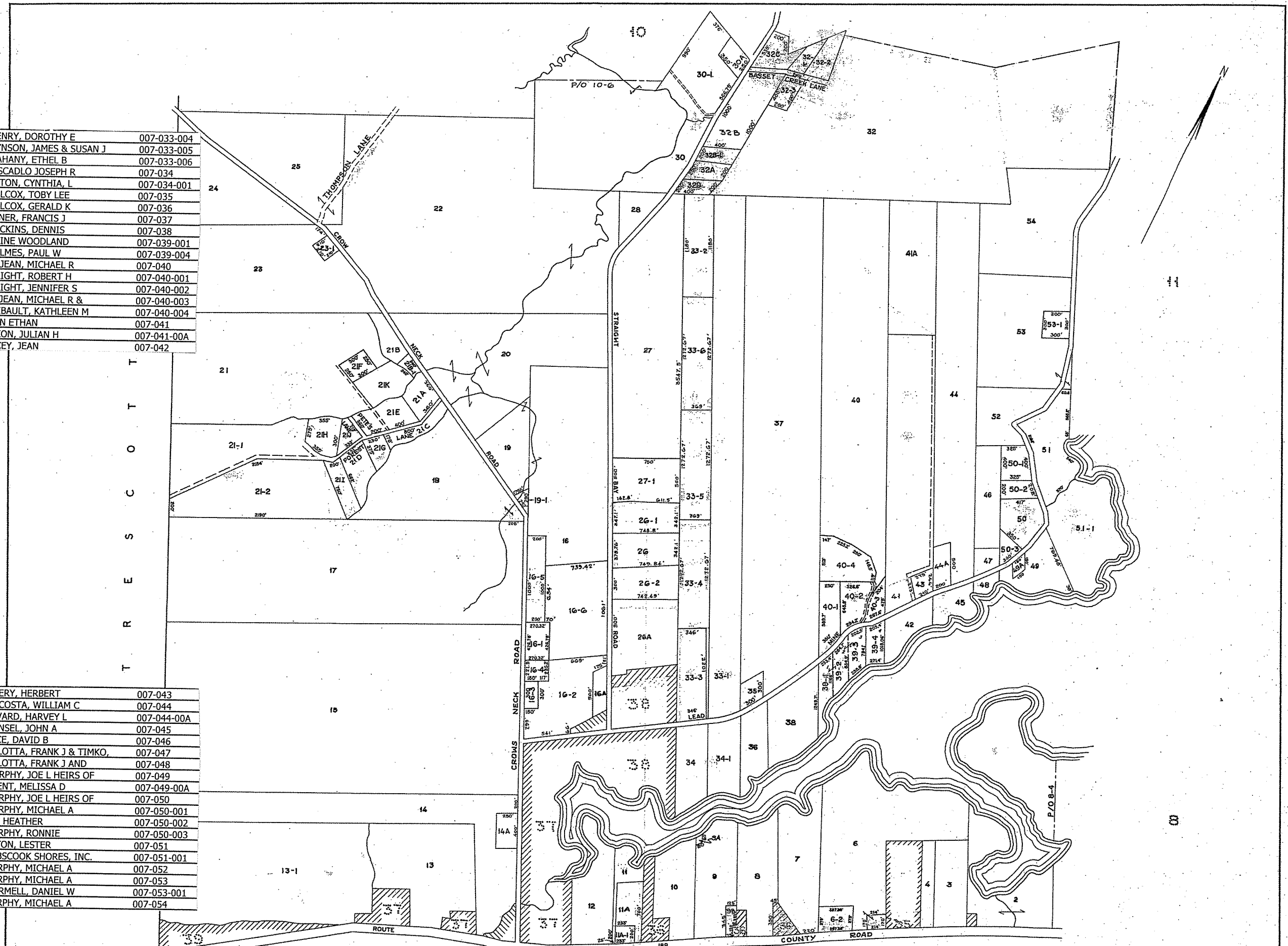


SWOPE, GALE ELIZABETH	007-002		
RAMSEY, MAUREEN	007-003		
DANIEL, VIRGINIA	007-004		
SLEIGHT, C KINGSLEY	007-006		
ARSENAULT, ROSE A	007-006-002		
MCCARTHY, BRUCE D	007-007		
RAYFIELD, TARQUIN T	007-008		
BURNS, JOHN C	007-009		
FOLEY, WILLIAM HEIRS	007-009-00A-U11		
FOLEY, WILLIAM HEIRS	007-009-00A-U12		
FOLEY, WARREN A	007-009-00A-U13		
FOLEY, WILLIAM HEIRS	007-009-00A-U14		
FOLEY, WILLIAM HEIRS	007-009-00A-U15	HENRY, DOROTHY E	007-033-004
WEST LUBEC METHODIST	007-009-00B	HYNSON, JAMES & SUSAN J	007-033-005
PEACH, JEFFREY & SUSAN	007-010	MAHANY, ETHEL B	007-033-006
LYONS STEVEN	007-011	PISCADLO JOSEPH R	007-034
LYONS, STEVEN E	007-011-00A	EATON, CYNTHIA, L	007-034-001
CASEY, DAWN MARIE	007-011-00A-001	WILCOX, TOBY LEE	007-035
LAPAGLIA, JOSEPH	007-012	WILCOX, GERALD K	007-036
PRATT, OLIVER	007-013	EXNER, FRANCIS J	007-037
BRUDERECK, JAMES R	007-013-001	HUCKINS, DENNIS	007-038
PRATT, ABIGALE & PRATT,	007-014	MAINE WOODLAND	007-039-001
COUSINS CHARLES C	007-014-00A	HOLMES, PAUL W	007-039-004
SPURLOCK, STEPHANIE - Et Al	007-015	ST JEAN, MICHAEL R	007-040
LYONS, DOROTHY	007-016	WRIGHT, ROBERT H	007-040-001
LYONS, JAMES A	007-016-000-MH1	WRIGHT, JENNIFER S	007-040-002
LYONS, TROY	007-016-000-MH7	JEAN, MICHAEL R &	007-040-003
LYONS, TODD	007-016-000-MH8	HIBAULT, KATHLEEN M	007-040-004
FULLER, APRIL	007-016-001	EN ETHAN	007-041
HUNTLEY, TIMOTHY & MARY	007-016-002	KON, JULIAN H	007-041-00A
LYONS, KIMBERLY	007-016-003	ICEY, JEAN	007-042
FULLER, APRIL L.	007-016-004		
CLEVELAND, WILLARD LEE JR.	007-016-005		
BUTLER, ROBERT G.	007-016-006		
LYONS, WALLACE	007-016-00A		
RIER, EDWIN J	007-017		
TOWNSEND, FRANK A	007-018		
TINKER, SHAWN E	007-019		
LYONS, ROSAMOND	007-019-001		
CASSELLA, VICTORIA	007-019-001-MH1		
SMITH, ROY HEIRS	007-020		
LAKEVILLE SHORES INC	007-021		
SIMONSON, TAMMI &	007-021-001		
SIMONSON, WILMER D HEIRS	007-021-002		
DENBOW, LEONA M (LE)	007-021-00A		
RHODES, PAULA	007-021-00A		
WRIGHT, RICKY W	007-021-00B		
WRIGHT, RICKY W	007-021-00B-001		
CHASE, CORY M	007-021-00C		
CASE, MELANIE WARREN	007-021-00D		
DENBOW, DOUGLAS E (LE)	007-021-00E		
EMERY, LARRY ESTATE OF	007-021-00F		
SIMONSON, WILMER D HEIRS	007-021-00G		
SIMONSON, WILMER D HEIRS	007-021-00H		
BRADFORD, MELANIE M	007-021-00I		
OSTRANDER, MARK D	007-021-00J		
DENBOW, LORETTA	007-021-00K		
DOUGLAS, DENBOW	007-021-00L		
MOORE, HORACE	007-022		
MOORE, HORACE e.	007-023		
HOLMES JANET G	007-023-001	AVERY, HERBERT	007-043
MAINE STATE OF	007-024	DECOSTA, WILLIAM C	007-044
MAINE STATE OF	007-025	RIVARD, HARVEY L	007-044-00A
WRIGHT, JENNIFER S	007-026	GENSEL, JOHN A	007-045
WRIGHT, ROBERT H	007-026-001	RICE, DAVID B	007-046
CARTY, PAUL	007-026-002	TALOTTA, FRANK J & TIMKO,	007-047
ALEXANDER, RICHARD F.	007-026-00A	TALOTTA, FRANK J AND	007-048
WILCOX, RICKY J	007-027	MURPHY, JOE L HEIRS OF	007-049
WRIGHT, RANDY	007-027-001	TRENT, MELISSA D	007-049-00A
UNIVERSITY OF MAINE	007-028	MURPHY, JOE L HEIRS OF	007-050
LYONS, JASON H	007-030	MURPHY, MICHAEL A	007-050-001
DAMOUR, MARGARET A	007-030-001	LEE HEATHER	007-050-002
MURRAY, WADE L	007-030-00A	MURPHY, RONNIE	007-050-003
IKOSSI, MARIE TRUSTEE	007-032	EATON, LESTER	007-051
LUMBIS, GEORGE E	007-032-001	COBSCOOK SHORES, INC.	007-051-001
LUMBIS, THOMAS F	007-032-002	MURPHY, MICHAEL A	007-052
LYONS, JOEY E	007-032-003	MURPHY, MICHAEL A	007-053
DINSMORE, CARROLL W JR	007-032-00A	WORMELL, DANIEL W	007-053-001
MURRAY, KATHY A	007-032-00B	MURPHY, MICHAEL A	007-054
SWALLOW, MICHAEL S	007-032-00B-001		
FARRAR LEA A	007-032-00C		
WENTWORTH, JANET M	007-032-00D		
EATON, CYNTHIA, L	007-033-001		
ROSS, ROBERT E	007-033-002		
KNIGHT, EDWIN	007-033-003		



**LEGEND**

PARCEL NUMBERS.....1
ADJACENT MAPS.....2
MATCH LINE.....

MISSING LOTS: 1

PROPERTY MAP  
**TOWN OF LUBEC**  
 WASHINGTON COUNTY, MAINE  
 JAMES W. SEWALL COMPANY  
 SCALE 1 INCH = 500 ± FEET  
 OLD TOWN, MAINE  
 APRIL 1958