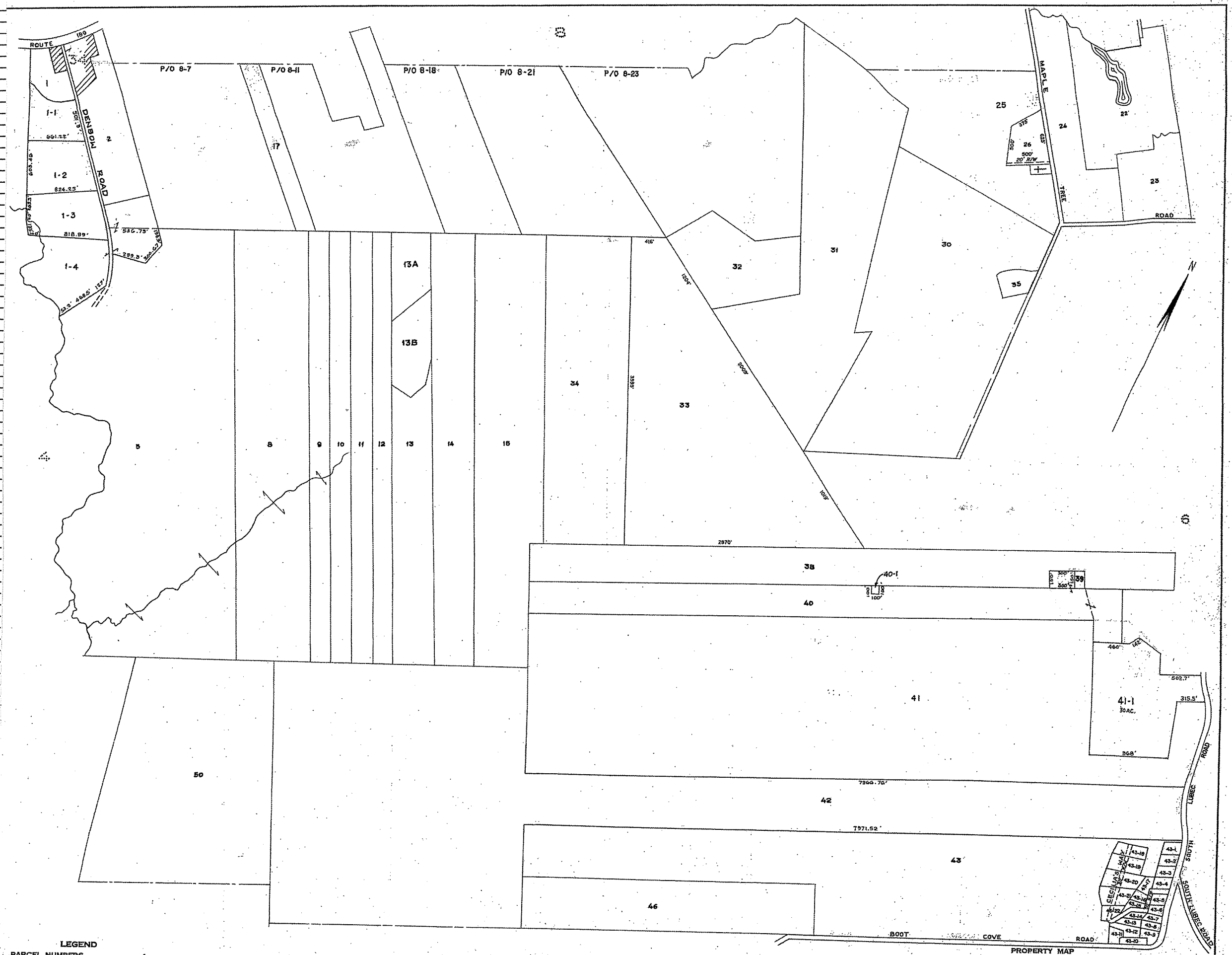


| | |
|---------------------------|-----------------|
| MURRAY, CRAIG & LINDA | 005-001 |
| MURRAY, CHAD | 005-001-001 |
| MURRAY, DAVID W | 005-001-002 |
| MURRAY, LEO G | 005-001-003 |
| DINSMORE, SHARON | 005-001-004 |
| DOHERTY, JAMES K | 005-002 |
| MAPLE TREE SHINGLE MILL | 005-002-000-BO1 |
| LYONS, JOHN D | 005-005 |
| RICE, DAVID B | 005-008 |
| MORRISON, LAWRENCE C | 005-009 |
| DOHERTY, JAMES | 005-010 |
| FOGG, LINDA | 005-011 |
| JONES, VINTON RICHARDS ET | 005-012 |
| MORRISON, LAWRENCE C | 005-013 |
| MORRISON, LAWRENCE C | 005-013-00A |
| LYONS, JOHN D | 005-013-00B |
| DOHERTY, JAMES | 005-014 |
| LYONS, JOHN D | 005-015 |
| LYONS, JOHN D | 005-017 |
| LUBEC WATER DISTRICT | 005-022 |
| LUBEC WATER DISTRICT | 005-023 |
| WILCOX, RICKY J | 005-024 |
| STANLEY, SHELDON M | 005-025 |
| MATTHEWS, CARSON LEE | 005-026 |
| LYONS, JOHN D | 005-030 |
| LYONS, JOHN D | 005-031 |
| GADDIS, GEORGE D | 005-032 |
| NEWELL, JARED D | 005-033 |
| LYONS, JOHN D | 005-034 |
| SCOVILLE, STEPHEN V | 005-035 |
| SCOVILLE, STEPHANIE | 005-038 |
| DORAN, FRED HEIRS | 005-039 |
| SCOVILLE, TIMOTHY LE | 005-040 |
| MAINE RSA #4 INC. | 005-040 |
| SCOVILLE, TIMOTHY | 005-040-001 |
| HOYT, RICHARD C | 005-041-001-UI1 |
| BOOKMAN, ELLEN JEAN | 005-041-001-UI2 |
| HOYT, RICHARD C | 005-041-UI1 |
| BOOKMAN, ELLEN JEAN | 005-041-UI2 |
| MAINE COAST HERITAGE | 005-042 |
| CMJ REALTY | 005-043 |
| TARDIFF, ROBERT E | 005-043-001 |
| REED, SANDRA P | 005-043-002 |
| TER POORTEN, JACOB | 005-043-003 |
| DOYLE TIMOTHY | 005-043-004 |
| RONAN, MARIAN | 005-043-005 |
| BAMFORD, TARA | 005-043-006 |
| HOPKINS, MICHAEL J | 005-043-007 |
| REILLY, SUSAN | 005-043-008 |
| FLEMING, KEITH E | 005-043-009 |
| DAY, DENNIS C | 005-043-010 |
| SHATTUCK, ANDREW W | 005-043-011 |
| SHATTUCK, ANDREW W | 005-043-012 |
| TARDIFF, ROBERT | 005-043-013 |
| HEPBURN, IISA STEWART | 005-043-014 |
| FEDERAL NATIONAL | 005-043-015 |
| TARDIFF, ROBERT | 005-043-016 |
| COULOMBE, CATHERINE M. | 005-043-017 |
| MISTLER, RICHARD E | 005-043-018 |
| MISTLER, RICHARD E | 005-043-019 |
| MISTLER, RICHARD E | 005-043-020 |
| WILLIAMS, BERNARD K & | 005-043-021 |
| PACHECO-KUPSTAS, RAQUEL | 005-043-022 |
| ARMFIELD, SAMUEL | 005-046 |
| LYONS, JOHN D | 005-050 |



LEGEND
 PARCEL NUMBERS.....1
 ADJACENT MAPS.....2
 MATCH LINE.....

MISSING LOTS: 4,6,7,6,18,19,20,21, & 36

PROPERTY MAP
TOWN OF LUBEC
 WASHINGTON COUNTY, MAINE
 JAMES W. SEWALL COMPANY
 OLD TOWN, MAINE
 SCALE: 1 INCH = 500 ± FEET