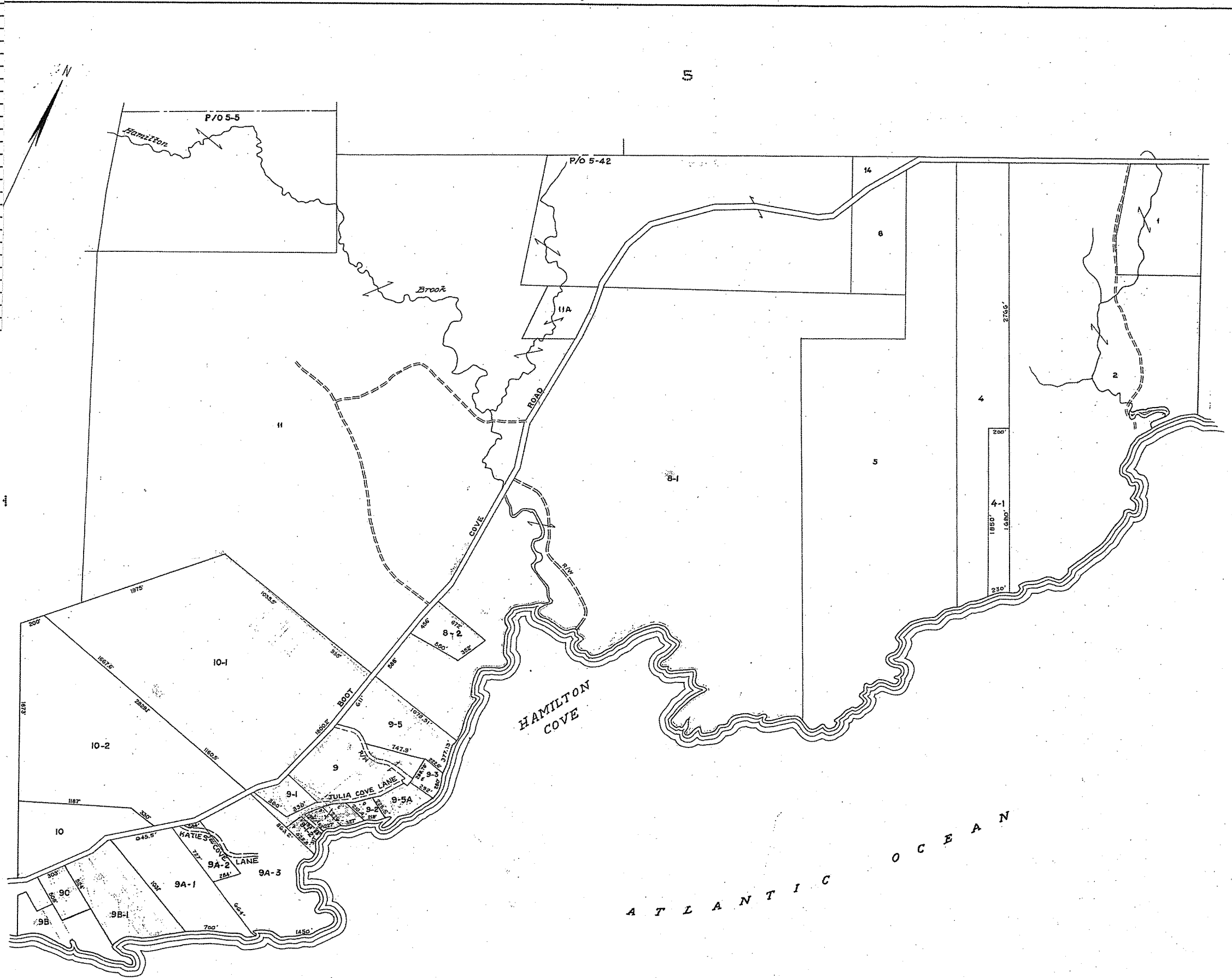


LUBEC TOWN OF	002-001
BRYN, ANDREW	002-002
SMITH, DARRELL C	002-004
WALL, THOMAS F & KEHOE,	002-004-001
MAINE COAST HERITAGE	002-005
MADDEN, SUE	002-006
MAINE COAST HERITAGE	002-008-001
HAM COVE LLC C/O CURTIS	002-008-002
JACKSON, AMY	002-009
JACKSON, HAROLD D INC	002-009-001
FULTON, WILLIAM	002-009-001-002
BEACHLER, KENT J	002-009-002
JACKSON, HAROLD D	002-009-003
KOSTUSH, DAVID N	002-009-005
HEATH, GERALD A	002-009-005-00A
LOOKABAUGH, MARK C	002-009-00A-001
LOOKABAUGH, MARK C &	002-009-00A-002
LOOKABAUGH, ERIK	002-009-00A-003
ENNIS, JOHN J	002-009-00B
ENNIS, JOHN J	002-009-00B-001
VOIGHT, ROBERT O II	002-009-00C
WASHBURN, STEPHEN S	002-010
MARTIN, WILLIAM H	002-010-001
WASHBURN, STEPHEN S	002-010-002
MAINE COAST HERITAGE	002-011
UMBLE, KARA L.	002-011-00A
MADDEN, SUE	002-014



**LEGEND**  
 PARCEL NUMBERS.....1  
 ADJACENT MAPS.....2  
 MATCH LINE.....

PROPERTY MAP  
**TOWN OF LUBEC**  
 WASHINGTON COUNTY, MAINE  
 JAMES W. SEWALL COMPANY, OLD TOWN, MAINE  
 SCALE 1 INCH = 500 ± FEET  
 APRIL, 1958